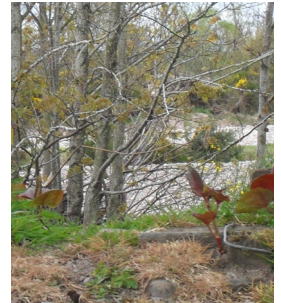


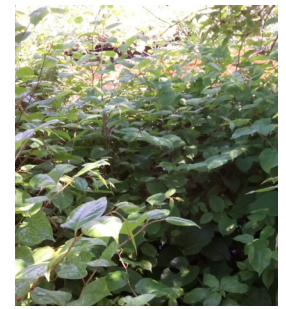
SPRING:

Small shoots begin to emerge from the crowns and rhizomes resembling asparagus spears. Shoots being red/purple in colour with rolled up leaves.



SUMMER:

Grows rapidly from the rhizome crown at the base, reaching a height of over 2m. Green with purple speckled hollow bamboo like stems with vibrant green leaves zig zagging all the way up the stem. Creamy white cluster of flowers are produced in late summer/autumn.



WINTER:

The plant dies back and store its energy within the underground rhizomes for the winter leaving dead hollow brown/orange coloured canes littering the surface. Dormant crowns are visible on the ground.



IF YOU THINK YOU HAVE JAPANESE KNOTWEED

Contact our Invasive Plants Team

Call: 0141 772 2789

email your pictures to:

invasiveplants@ersremediation.com